



CATALOG



Table of Contents

01. Profiles

Galvanized round tubes, galvanized square and rectangular profiles, black steel profiles (square, rectangular, and round), open stud and track profiles, C and Z purlins, and Steel Framing profiles C89 and C310.

02. Steel

Reinforcing rods and bars, square and round bars, hot-rolled sheet (tola), metal deck, Aluzinc sheets, zinc sheets and Ground Screws.

03. Drywall

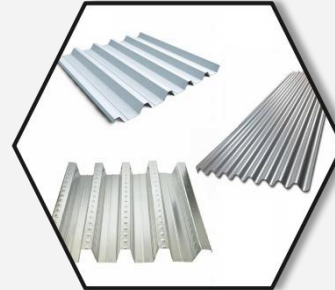
Profiles, panels, accessories, and screws for lightweight interior construction systems.

04. Hardware SHOP

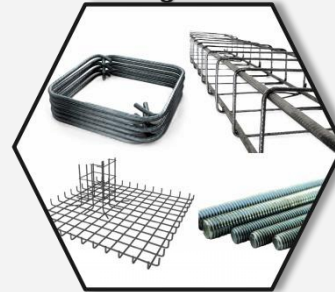
Annealed wire, galvanized wire, and barbed wire; welded mesh, rectangular and octagonal boxes, zinc nails, and steel nails.

05. Services

Manufacturing of rings, grids, columns, and pedestals with bending and threading processes for rods according to structural design. We offer comprehensive engineering, design, and metal structure fabrication services, ensuring precision, strength, and quality in every project.



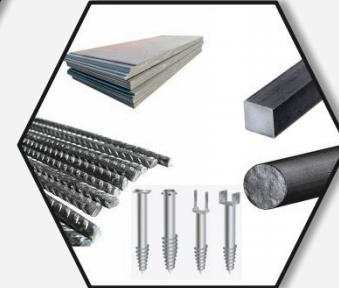
Galvalume steel sheets,
steel decking, and zinc
roofing sheets



Service



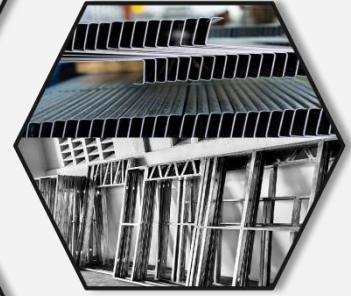
Profiles



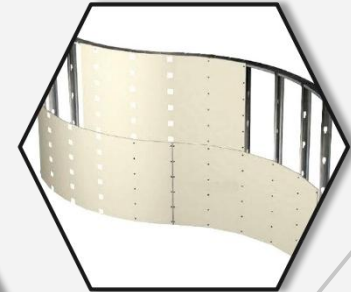
Hot-rolled bars, rods,
sheets and Ground
Screws



Hardware shop



C-Z Purlins
Steel Framing



Dry wall

PROFILE



OPEN PROFILE STUD PROFILE

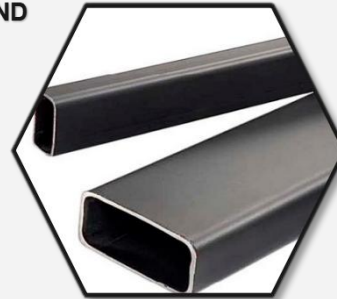
DIMENSIONS:
1-5/8 X 10 X 0.40mm
2-1/2 X 10 X 0.40mm
3-5/8 X 10 X 0.40mm



GALVANIZED ROUND TUBE

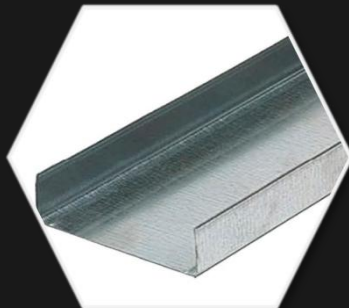
7/8"
1"X1 1/2"
13/4"
2"
2 1/2"
3"

THICKNESS
1.20mm | 1.60mm
LENGTH::
20'



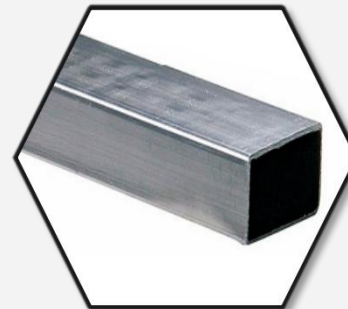
BLACK STEEL RECTANGULAR PROFILE

1"X1 "2"X4"2 | "X1"|
2-3/8"X1 1/2" | 3"X1-1/2" |
2"X3"
THICKNESS:
1.20MM | 1.60MM
LENGTH:
20'



OPEN PROFILE TRACK PROFILE

DIMENSIONS:
1-5/8 X 10 X 0.40mm
2-1/2 X 10 X 0.40mm
3-5/8 X 10 X 0.40mm



GALVANIZED RECTANGULAR PROFILE

3/4"X1 1/2"
2"X14
2"X4"
2 3/8"X1 1/2"
2"X3"
THICKNESS:
1.20mm | 1.60mm
LENGTH:
20'



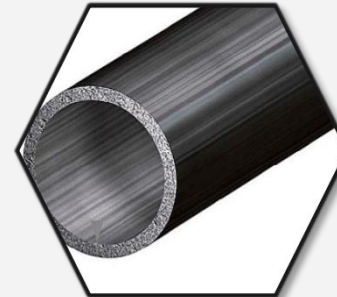
GALVANIZED SQUARE PROFILE

3/4"X1 1/2"
2"X14
2"X4"
2 3/8"X1 1/2"
2"X3"
THICKNESS:
1.20mm | 1.60mm
LENGTH:
20'



BLACK STEEL SQUARE PROFILE

1-1/3"X 1-1/3" | 1"X1" |
"X3/4"3/4
1"X1 | "3"X3"2 "X2"
ESPESOR: 1.20mm
1.60mm
LENGTH:20'



BLACK IRON ROUND PROFILE

3/4" | 1-1/4" | 1-1/2" | 1" |
2" | 3"
THICKNESS:
1.20MM | 1.60MM
LENGTH:
20'

DESCRIPTION

STEEL FRAMING

Structural system made of high-strength galvanized steel, designed to provide precision, lightness, and durability in industrial, residential, and various types of construction. Its manufacturing process incorporates tempered steel shafts that ensure rigidity and stability, along with hardened steel rollers that guarantee uniform shaping without deformations. All materials comply with ISO 9001 and CE certifications, ensuring structural quality, safety, and reliable performance under the most demanding international standards.

DIMENSIONS:

C89 Profile Width: 89 mm

Thickness: 0.60 mm to 1.20 mm

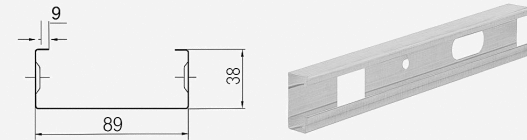
C310 Profile Width: 310 mm

Thickness: 1.50 mm to 2.50 mm

C-Z PURLINS

CZ Purlin Size: Custom-made

Material Thickness: 0.8 mm to 3.0 mm



Profile Model	C Section (mm)			Thickness
	Web	Flange	Lip	
C89	89	38	9	0.6-1.2mm



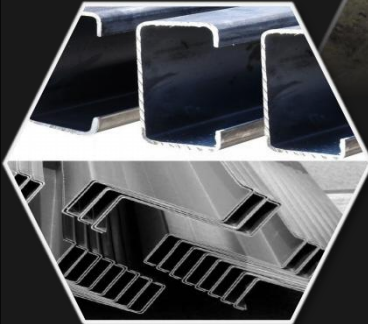
Profile Model	C Section (mm)			Thickness
	Web	Flange	Lip	
C310	310	50	12	1.5-2.5mm



PROFILE C89



PROFILE C310



C-Z PURLINS



HOT-ROLLED SHEET ESPESOR:

1/16" (1.55mm) | 3/32" (2.55mm)

1/8" (3mm) | 3/16" (4.5mm)

1/2" (6mm Y 6.20mm)

DIMENSIONS:

4'X8' | 4'X10' | 5'X10'

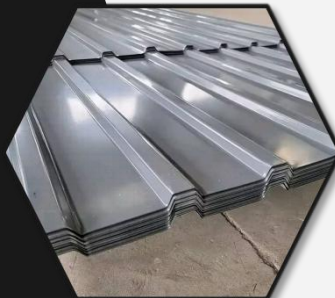
5'X12'|9'X10'| 6'X12'| 6'X20'

CORRUGATED

3/32" (2.25mm) | 1/8" (3mm) |

3/16" (4.5mm).

SIZE: 4'X8'



ZINC-COATED CORRUGATED SHEET

**DIMENSIONS AND
THICKNESSES:**

DIMENSIONS: 1.10 m

LENGTH: 3.60 m

GAUGE 28 (0.30mm)



STEEL RODS

3/4" | 1/2" 3/8"

LONGITUD:
20'



STEEL SQUARE BAR

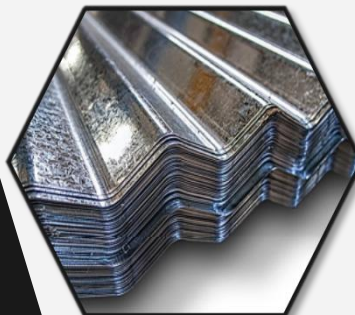
3/8"

5/8"

1/2"

1"

LENGTH: 20'



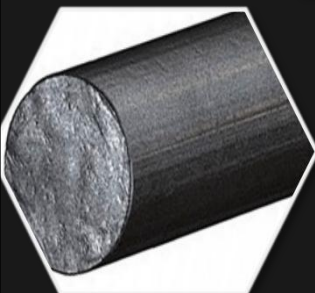
ZINC SHEET

GAUGE 34 (0.20mm)

GAUGE 29 (0.26mm)

DIMENSIONS:

3'X6'/3'X12'



STEEL ROUND BAR

3/8"

5/8"

1/2"

1"

LENGTH: 20'



STEELDECK

WIDTH: 1.05 m

LENGTH: 1.00 m, MINIMUM AND MAXIMUM
RECOMMENDED 12.00m

GAUGE 14 (1.90mm)

GAUGE 26 (0.45mm)

STEEL

FOUNDATION

GROUND SCREWS

The construction industry is evolving, and StopDigging offers foundation solutions with ground screws that are faster, more sustainable, and more versatile than traditional concrete.

Main Advantages:

Speed: Quick installation with no curing time or weather delays.

Sustainability: No excavation or concrete, reducing waste and environmental impact.

Versatility: Suitable for different terrains and structures, adapting to each project.



SGC Adapter Screw



SGN Pipe Screw



SGP Adapter Screw



SGS Post Screw



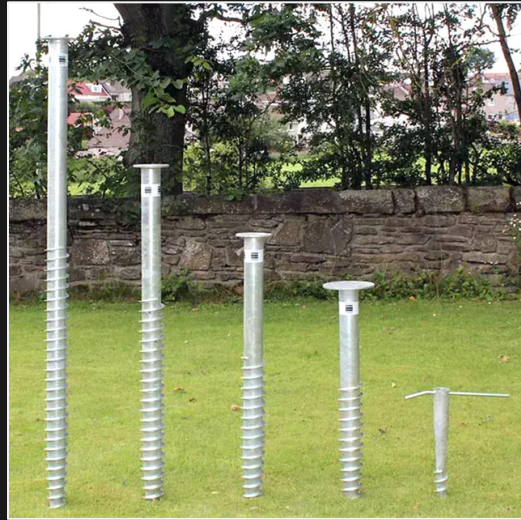
SGU Beam Screw



SGX Adapter Screw

Model	Dimensions (thickness)	Main Use
SGC 67×2 / 67×3	67 mm × 2–3 mm	Light or small structures
SGC 76×4	76 mm × 4 mm	Subfloors and medium structures
SGC 89×4 / 89×5	89 mm × 4–5 mm	Heavy structures or with high lateral moment
SGU 95 (Beam Screw)	95 mm	Decks and beams
Extensions	—	Increase depth and axial capacity

IMAGES



SERVICE

COLUMNS, REBARS, RINGS, AND PEDESTALS

We offer comprehensive solutions for the manufacturing and shaping of metal structures, covering the following services:

Steel assembly for concrete columns.

Fabrication of metal grids for foundations, platforms, and structural bases, ensuring stability and durability.

Production of metal rings in various diameters and radii, adapted to project specifications.

Shaping and assembly of pedestals for reinforced concrete columns and W beams.

Threading and machining of rods, for use in rod connections.

All work is carried out using certified steel under ISO and CE standards, ensuring quality, safety, and precision in every process.

**RINGS AND
COLUMNS**



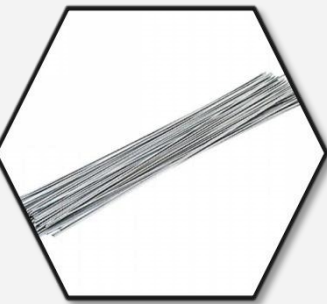
**PEDESTALS AND
THREADING**



GRILLES



HARDWARE SHOP



BARBED GALVANIZED WIRE

C-16 (10/1)
C-18 (10/1)




GALVANIZED WIRE

GAUGE 10/12/14/16/18
PESO: 50LBS
PACKAGING: 50 ROLLS
OF 1 LB



COMMON NAIL


DIMENSIONS:
2" - 3.55mm
2-1/2" - 3.35mm
3" 3- 3.80mm



WELDED WIRE MESH

GAUGE 17/16/14

DIMENSIONS:
110m/250m



RECTANGULAR BOX


DIMENSIONS:
2" X4" -1/2"
2" X4" -3/4"
THICKNESSES:
1.2mm / 1.5mm



ZINC NAIL

DIMENSIONS:
2-1/2 X 9G"

WITH SHOE / WITHOUT
SHOE



BARBED WIRE

GAUGE 17/16/14
DIMENSIONS:
110m/250m



OCTAGONAL BOX

MEDIDA:
1/2"
3/4"
THICKNESSES:
1.2mm / 1.5mm



STEEL NAIL

DIMENSIONS:
1-1/2" X 9mm
2" X 9
2-1/2" X 8
3" X 8
4" X 8

DRY WALL (*Coming Soon*)

DRYWALL PANELS

Standard Width: 1,219 mm (4 ft)

Common Length: 2.44 m to 3.66 m (8 ft to 12 ft)

Thickness: 19 mm (3/4")

Compliance: ASTM C-1396 Standard, with UL fire-resistance certifications (Type X)

